



Extend your Lifestyle[®]
Sundream[®] Pergola Awnings

Sundream
MaxiRail
Compact
Compact ZipFast
Cubix ZipFast
Cubix Teleskopic
Steer-Around

ALUXOR |||||
AWNING SYSTEMS

shading your lifestyle

Pergola and Conservatory Sunshade Solutions

Australians enjoy relaxing outdoors at home and the Sundream retractable awning provides the perfect solution for sunshade protection without permanently blocking natural light from entertaining or glass enclosed areas.

The Aluxor Sundream range of awnings provide the perfect sunshade solution, designed with either a fully integrated mounting frame or retrofitted to an existing pergola, glass conservatory or other building design such as within steel frame structures.

Sundream awnings are stylish, reliable, easy to maintain and robust. The clean profile lines with concealed tensioned operating mechanism provides an elegant, contemporary design to enhance any outdoor living area.

German designed, Australian made

Wind rating up to 38-49 km/hour

Extensive range of customised solutions

Internal springs to maximise fabric smoothness and tension

High grade materials of uncompromising quality

Proven performance in Australian conditions

European Certification EN13561 and EN1932

Five year warranty

Sundream MaxiRail

Aluxor Awning Systems is a specialist manufacturer of premium, high-quality retractable sunshade systems serving customers in Australia for over 40 years.

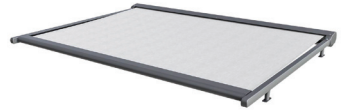
Our Sundream range combines precision German engineering with local expertise and product knowledge, tailored for Australian conditions.

Aluxor's Sundream awnings are stylish, innovative and highly reliable, backed by a five year warranty. Aluxor's awnings are built to last.

Sundream Features

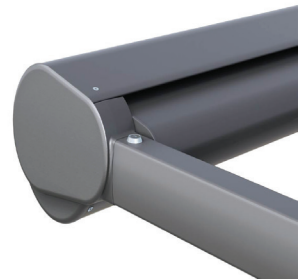
Cassette design

- Robust extruded aluminium cassette and guiderails provide optimal corrosion free protection when exposed to sun and rain.
- Single units up to 39m² can cover large areas.
- The cassette fully conceals the tension springs, motor and fabric when retracted, so providing a discrete and slimline encasement.
- Customised powdercoat finish to a selection of over 140 colours.
- An extensive range of high quality, vibrant acrylic canvas fabrics provide full sunlight protection or a range of PVC mesh fabrics that allow 86% to 93% filtered light.



Operating mechanism

- The tubular motor is housed discreetly inside the cassette and enables quick and easy extension and retraction of the awning.
- Motors can be hardwired and integrated with building management control systems or with remote control handset operation.
- The internal operating springs and kevlar drive tapes enable hassle-free operation.
- The awning can be fully or partially extended to provide flexibility for use and operation whilst still maintaining the fabric at full tension.
- For larger awnings a fixed stabilising cross rail is fitted to provide further fabric support, with additional cross rails available as required.



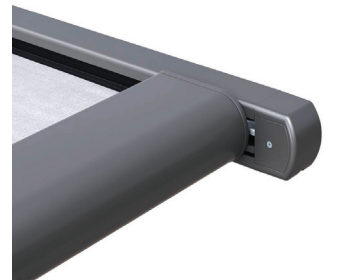
Installation options

- A range of installation options include fitting between courtyard walls, integrated into steel frame structures or fitted above or below a pergola, skylight or glass conservatory.
- For the standard mounting the cassette is fitted to the guiderails and does not require any separate fixing of the headbox to a structure.



MaxiRail and Steer-Around

- The **MaxiRail** is ideal as an integrated mounting frame and awning where there is no existing pergola.
- The sturdy guiderails and front mounting posts support a fully operational awning extending up to 6.5m with the headbox fitted to a wall, fascia or roof.
- The **Steer-Around** enables the awning to change angles one or more times when extended.



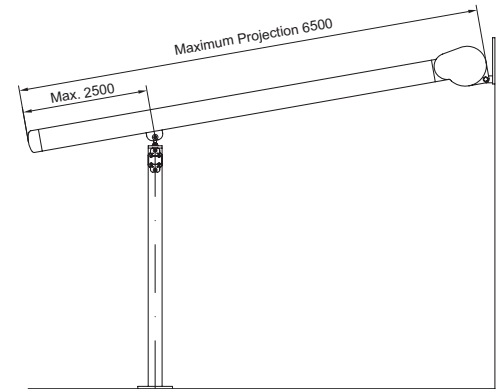
Compact, ZipFast, Cubix and Teleskopik

- For shade areas of up to 20m² the **Sundream Compact, ZipFast and Cubix** are ideal for smaller applications.
- The **Cubix Teleskopik** is fitted with front posts, where a post can be adjusted to allow water run-off to one side of the awning.



MaxiRail

- Integrated mounting frame and awning provides the ideal sunshade solution for a deck, courtyard or veranda where there is no existing pergola or mounting structure, with widths up to 6.5m to a total area up to 35m².
- The heavy duty 95 x 60mm extruded aluminium guiderails can extend up to 6.5m without any intermediate support, so providing a clear, uncluttered entertaining or living area with retractable sunshade protection. The guiderails can also be cantilevered up to 2.5m past the fixing posts where extended sunshade is required.
- The MaxiRail cassette can be secured directly to a wall or rafters with fascia or roof mount brackets. Customised installation solutions can be designed to create the optimal cassette fitting tailored for each application.
- The MaxiRail can be installed with 60 x 60mm posts and variable pivot mounts, or without posts where there are end fixings for the guiderails, such as between walls in a courtyard. Standard front post height is 2250mm that can be customised as required.
- An optional infill profile can be fitted to cover the 20mm gap between the guiderail and fabric.
- A Free Standing option is also available with 115 x 115mm posts, enabling the Sundream to be fitted over a swimming pool or to create a separate garden pavilion.



		MaxiRail Width		
		To 5500	6000	6500
Projection	To 5500	A	A	A
	6000	A	A	-
	6500	A	-	-

A: Available



Sundream and MaxiRail - Technical Design Features

- The durable Kevlar drive tapes that run through the spring pulleys and guiderails connecting to the front rail are rated to 230kg resistance.
- The internal roller has two heavy duty springs that each increase the total load from 20kg to 60kg while the awning extends so that the fabric is always under tension.
- The Sundream lateral adjusting brackets provide greater flexibility for installation to ensure optimal mounting alignment.
- The front rail internal drive pin and spring are designed to allow lateral movement during extension and retraction to enhance smooth operation in high wind conditions.
- These installation and mechanical designs give greater operating tolerances that enhance the performance and durability, particularly for larger awnings.

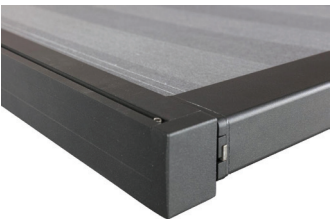
Compact ZipFast



Compact Range

Compact, ZipFast® and Cubix®

- For smaller areas up to 20m² the **Sundream Compact, ZipFast** and **Cubix** models are the ideal retractable sunshade cover. With the headbox cassette at only 145 x 163mm and slimline guiderails at 52 x 32mm, the discrete design of the Compact is perfect for fitting to a timber pergola or steel frame structure.
- The **Compact** uses the same operating mechanism as the Sundream, with heavy duty springs and tubular motor housed inside the cassette and Kevlar drive tapes extending and retracting the front rail, with the tension on each spring increasing from 7kg to 25kg during extension.
- The carriage design and pulley mechanism allows the front rail to align with the guiderail ends when fully extended, adding to the contemporary design and finish.
- The **ZipFast** model uses a larger guiderail profile at 69 x 55mm, with the fabric extending into a PVC channel housed in the guiderail to optimise sunshade protection and eliminate any gap between the fabric and extrusion.
- The **Cubix** has all the features of the ZipFast, with a contemporary cube-shaped headbox. The Cubix can also be integrated with **Teleskopik** front posts to adjust the angle of the awning.
- The Compact, ZipFast and Cubix are suitable for bottom, side and top mounting to provide flexible installation options.



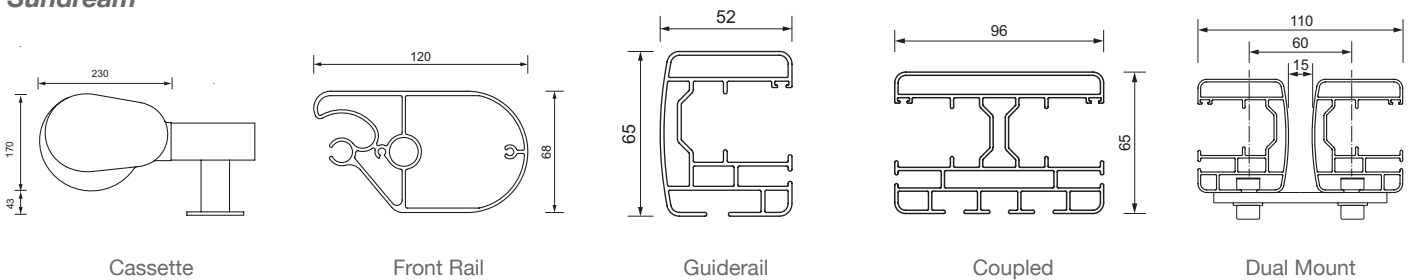
Teleskopik

- The **Cubix ZipFast** can be fitted with an adjustable front post to assist with water run-off in light rain. Available in widths up to 6m and projection to 5.5m (maximum area 20m²) the **Teleskopik** adds versatility to the **Cubix** in light rain conditions.
- The headbox is fitted to a wall or other structure with brackets that can pivot as the front post height is adjusted.
- The ZipFast ensures optimal fabric tension on the sides and ends of the awning with no light gap between the fabric and guiderails.
- For larger size awnings an additional fixed crossrail may be fitted for fabric support or to stabilise the front posts.
- The **Teleskopik** post can tilt the fabric to a front corner to allow for water drainage when adjusted to a minimum inclination of 15°.

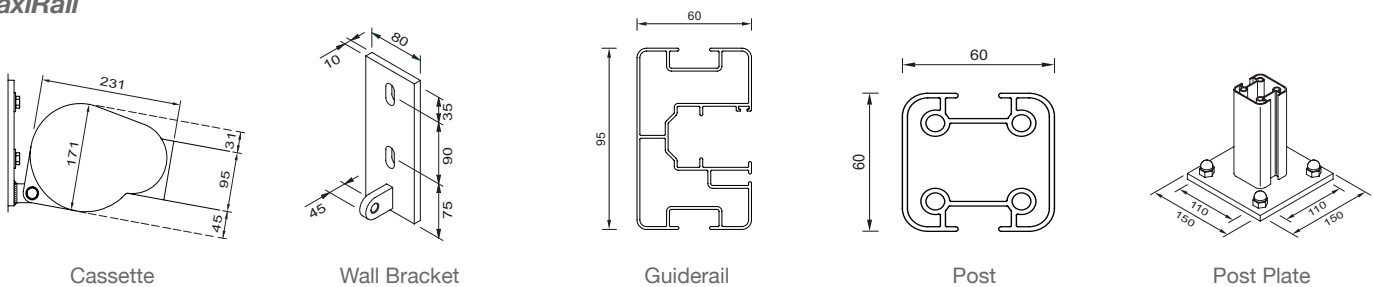


Technical Drawings

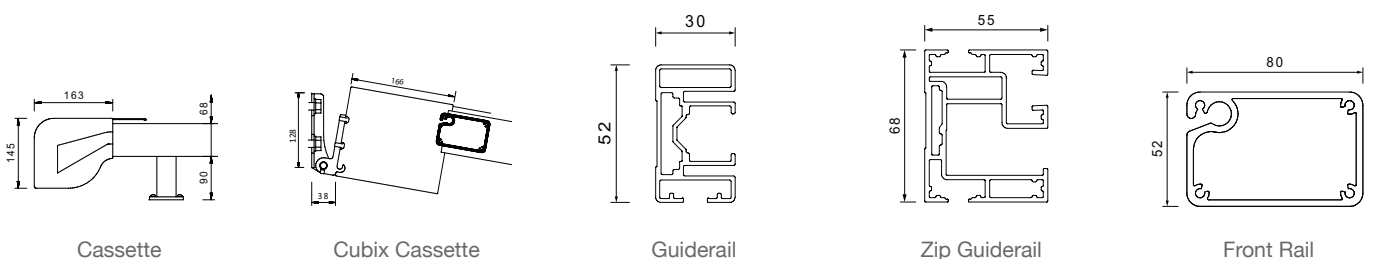
Sundream



MaxiRail

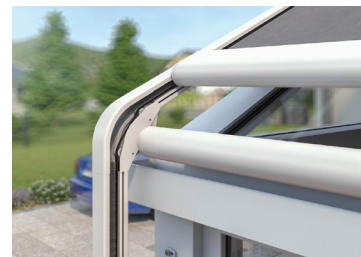
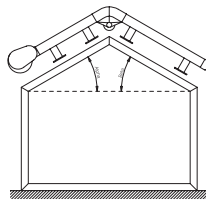
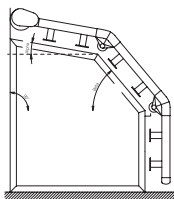
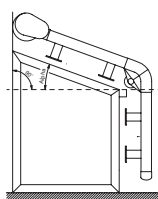


Compact Range



Sundream Steer-Around

- A special feature of the Sundream is the Steer-Around option whereby the awning direction can be changed one or more times at any angle up to 90°.
- The flexibility of the Steer-Around design makes it ideal for pergola structures where overhead projection is required as well as a vertical screen to protect from early morning or late afternoon sun.
- The cast aluminium angle sections are customised to the desired angle, enabling the Sundream to extend horizontally before extending to become a vertical shading or to traverse up and over an A-frame glass conservatory.



Specifications

	Sundream®	MaxiRail	Compact	ZipFast®	Cubix®
Key dimensions (mm)					
Headbox size (h x d)	170 x 230	171 x 231	145 x 163	145 x 163	145 x 166
Fixing height (incl. mounting)	213	Posts	158	169	184
Guiderail dimensions (h x d)	65 x 52	95 x 60	52 x 30	68 x 55	68 x 55
Front rail dimensions (h x d)	68 x 120	68 x 120	52 x 80	52 x 80	52 x 80
Post dimension (Int / Ext)	-	60 x 60	-	-	70 / 86
Distance guiderail to fabric	30	20	25	0	0
Distance front extrusion to end	70	75	0	0	0
Width / Projection (mm) / Area (m²)					
Width range (single unit)	1350 - 6500	1450 - 6500	1400 - 6000	1400 - 5000	1400 - 6000
Maximum projection	6500	6500	5000	5000	5000
Maximum cantilever	1500	2500	300	500	500
Maximum area (single unit)	39	35	20	20	20
Wind class (km/hr)					
Wind rating	38	38	38	49	49
Installation features					
Coupled (multiple units)	A (max. 4)	-	-	-	-
Dual mount (multiple units)	A	A	A	A	A
Steer-Around					
Integrated frame / posts	-	✓	-	-	-
Teleskopic front post	-	-	-	-	A
Lateral adjusting mount brackets	✓	Posts	-	-	-
Extension / Side mount brackets	A	Posts	A	A	A
Fabric support extrusion (by size)	✓	✓	-	-	✓
Operation / Automation (only)					
Motorised hardwired / remote	✓/A	✓/A	✓/A	✓/A	✓/A
Wind and rain sensors	A	A	A	A	A
Fabric					
Acrylic / PVC mesh (size limits)	✓/A	✓/A	✓/A	✓/A	✓/A
Fabric	-	-	-	✓	✓
Powdercoat					
Dulux Duralloy / Interpon Base	✓	✓	✓	✓	✓
Dulux / Interpon / Other finishes	A	A	A	A	A

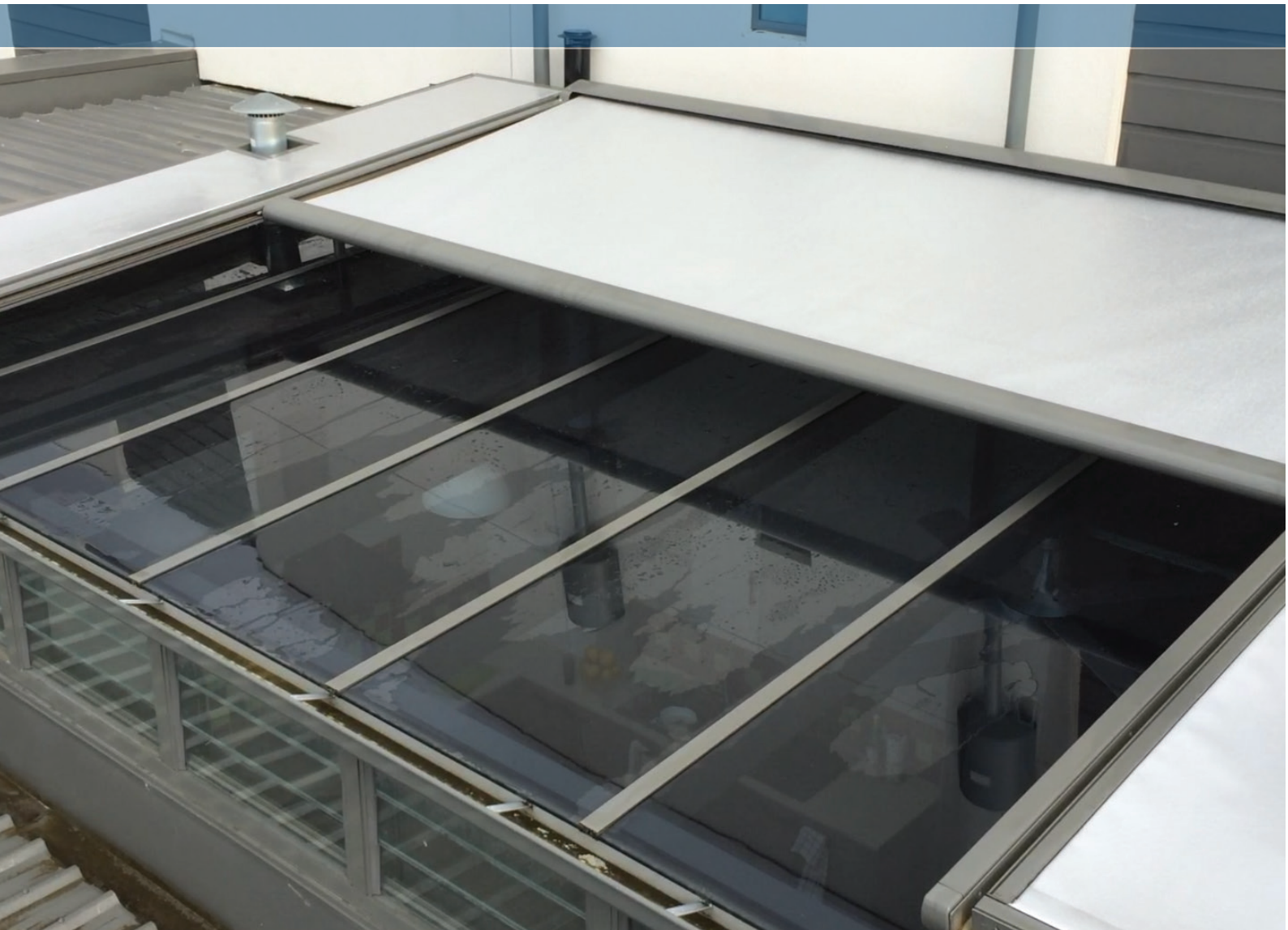
✓: Standard

A: Available

- : Not available / Not applicable

Sunshade protection CARE: The Sundream range is designed as a sunshade system. Although the acrylic canvas fabric can withstand light rain, this may result in water pooling that may stretch the fabric over time. A minimum angle of 10 - 15°, depending on the awning size, may assist to reduce the risk of water pooling and eyelets may be fitted to the front of the fabric to assist in water drainage for some models.

Sundream®, ZipFast® and Cubix® are registered trademarks of Aluxor Industries Pty Limited.



*Conditions apply

Aluxor Awning Systems
Aluxor Industries Pty Ltd
www.aluxor.com.au

ALUXOR |||||
AWNING SYSTEMS