



*Extend your Lifestyle®*

Toga Awning

### *create the outdoor room*

The Toga's contemporary, design makes it ideal for homes with the semi-enclosed extruded aluminium cassette protecting the mechanism and fabric against dirt and corrosion. The Toga reaches sizes up to 7m width and 4m in projection and is suitable for wall or top mount installations. Aluxor can also supply customised brackets to suit site specific installations.

The Toga frame and extruded aluminium fascia are available in 8 standard or 140 custom colours. The awning can be operated manually by a crank handle and gear operation, or can be motorised with optional sun, wind and timer systems.

The Toga can be adapted to incorporate our special **Oversquare** design whereby the awning can project to a distance that is greater than its width.

A **Vario Volant** option is also available in manual or motorised control whereby a retractable vertical fabric screen, usually being a see-through mesh fabric, is fitted inside the front rail. This is ideal for blocking out sun glare from west facing locations and seasonal low direct sun while still enjoying the views.

Aluxor Awnings is a leading manufacturer of German precision-engineered awnings, operating in Australia for over 40 years. Using high grade materials of uncompromising quality, Aluxor awnings are built to last.





**All operating components** are designed and manufactured in Germany and certified by international testing agency TÜV to the European standard 'CE Marking'.

**The Secuflex 70II folding arms** use tensioned, spring loaded, PVC coated triple steel cables that provide added protection against corrosion. These cables are individually hung to provide excellent wind stability and fabric tension.

**The Secuflex 70II arms are able to withstand** 120,000 cycles of stress, as certified by Materials Testing Authority of Germany.

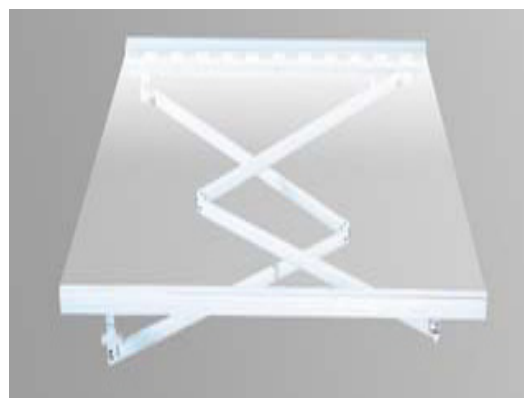
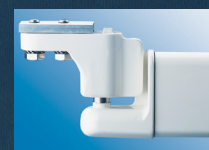
**Patented pivot ball** front bar connector provides the best possible operational safety.

**Extruded aluminium profiles** for pelmets and cassettes provide solid, stable and long lasting quality that will not rust or vibrate in harsh conditions.

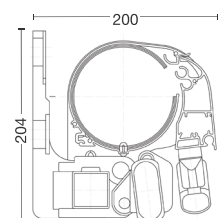
**Construction hardware** is made of marine grade 316 stainless steel.

**Powdercoated galvanised steel** support bars have a high durability epoxy undercoat, Pacesetter HP200, 160 microns thick to provide additional anti-corrosion protection.

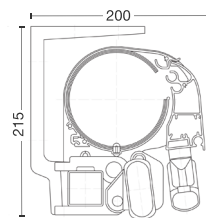
**Patented aluminium brackets and components** with pretreated powdercoat finish..



Oversquare



Wall Installation



Ceiling Installation

## Specifications

<i>Dimensions mm (h x d)</i>	✓ 210 x 185
<i>Width (single unit)</i>	✓ 2m – 7m
<i>Projection range</i>	✓ 1.5m – 4m
<i>Pitch range</i>	✓ Up to 45°
<i>Frame custom colours</i>	A 140 colours powdercoated
<i>Oversquare</i>	A Projection greater than width
<i>Vario Volant</i>	A Up to 2m manual or motorised screen
<i>Fabric</i>	✓ Acrylic canvas
<i>Fabric</i>	A PVC plastisol coated
<i>Operating mechanism</i>	✓ Manual
<i>Automation features</i>	A Motorised, sun, wind & timer systems
<i>Automation sensors</i>	A Motion, sun and wind

✓: Standard A: Available

\* Designs and specifications may change without notice

## Standard Powdercoat Colours

	White Satin		Woodland Grey Satin
	Silver Matt		Monument Satin
	Cream Satin		Black Satin
	Riversand Matt		Sable Bass (Textured)



\*Conditions apply

Aluxor Awning Systems  
Aluxor Industries Pty Ltd  
[www.aluxor.com.au](http://www.aluxor.com.au)

**ALUXOR** |||||  
AWNING SYSTEMS