



Extend your Lifestyle® Stratos I® Awning

create the outdoor room

Aluxor's awnings add charm to any setting while providing a perfect indoor outdoor environment for entertaining, day or night.

The Stratos is a classical awning protecting against the sun or light rain as well as creating a cosy and private ambience. Ideal for patios, verandahs, balconies and restaurants, the large pavilioned space free of structures and poles, up to 21m width and 4m projection.

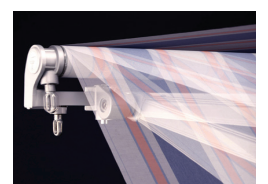
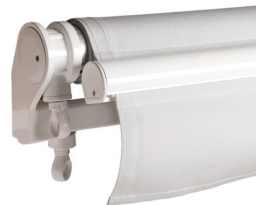
The Stratos I is available in 8 standard colours and can also incorporate the **Oversquare** feature, enabling the projection to be greater than the width. Where additional protection is required the awning can also be fitted with an extruded aluminium or Colourbond metal pelmet.

A motorised or manual operated **Vario Volant** option is also available whereby a retractable vertical fabric screen is fitted inside the front rail. This is ideal for blocking out sun glare from west facing locations while still enjoying the view.

Selectapitch®

Another special feature of the Stratos I is **Selectapitch** enabling the angle of the awning to be adjusted to block the morning or afternoon sun, or even use it as a rain shelter in calm conditions.

Any angle from 7° to 55° can be easily and quickly set, with the crank handle adjusting both arms simultaneously. Aluxor awnings are built to last.



All operating components are designed and manufactured in Germany and certified by international testing agency TÜV to the European standard 'CE Marking'.

The Secuflex 70II folding arms use tensioned, spring loaded, PVC coated triple steel cables that provide added protection against corrosion. These cables are individually hung to provide excellent wind stability and fabric tension.

The Secuflex 70II arms are able to withstand 120,000 cycles of stress, as certified by Materials Testing Authority of Germany.

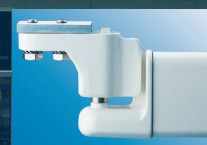
Patented pivot ball front bar connector provides the best possible operational safety.

Extruded aluminium profiles for pelmets and cassettes provide solid, stable and long lasting quality that will not rust or vibrate in harsh conditions.

Construction hardware is made of marine grade 316 stainless steel.

Powdercoated galvanised steel support bars have a high durability epoxy undercoat, Pacesetter HP200, 160 microns thick to provide additional anti-corrosion protection.

Patented aluminium brackets and components with pre-treated powdercoat finish.



Specifications

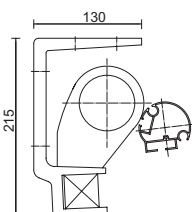
<i>Dimensions mm (h x d)</i>	✓ 215 x 130 / 245 x 185 pelmet
<i>Width single unit / coupled</i>	✓ 2m – 7m / 21m maximum
<i>Projection range</i>	✓ 1.5m – 4m
<i>Pitch range</i>	✓ Up to 45°
<i>Selectapitch (max) (w x p)</i>	A 5.5m x 3.5m / (pitch range 7-55°)
<i>Oversquare</i>	A Projection greater than width
<i>Vario Volant</i>	A Vertical screen to 2m (manual/motor)
<i>Frame custom colour</i>	A 140 colours powdercoated
<i>Extruded pelmet</i>	A 8 standard / 40 custom colours
<i>Fabric</i>	✓ Acrylic canvas with valance
<i>Operating mechanism</i>	✓ Manual
<i>Automation features</i>	A Remote operated motor
<i>Automation sensors</i>	A Motion, sun and wind

✓: Standard A: Available

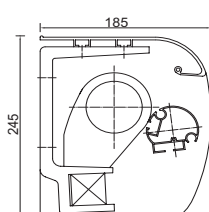
* Designs and specifications may change without notice.

Standard Powdercoat Colours

	White Satin		Woodland Grey Satin
	Silver Matt		Monument Satin
	Cream Satin		Black Satin
	Riversand Matt		Sable Bass (Textured)



No Pelmet



Pelmet



*Conditions apply

Aluxor Awning Systems
Aluxor Industries Pty Ltd
www.aluxor.com.au

ALUXOR |||||
AWNING SYSTEMS