

Extend your Lifestyle®

Aluxor Eco® Awning



create the outdoor room

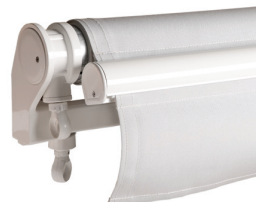
Aluxor's awnings add charm to any setting while providing a perfect indoor outdoor environment for entertaining, day or night.

The Aluxor Eco is a classical awning that protects against the sun or light rain as well as creating a cosy and private ambience. Ideal for patios, verandahs, balconies and restaurants, the retractable folding arm system creates a large pavilioned space free of structures and poles, up to 6m width and 3m projection.

For installations that are well protected, such as under roof eaves, the Aluxor Eco is an ideal awning for home or retail applications. Where additional protection is required the awning can be fitted with an extruded aluminium or Colorbond metal pelmet.

Using German designed and manufactured systems the operation can be set at any angle to 35° and operated manually or motorised.

The Aluxor Eco is available in three popular colours of white, silver and cream in sizes up to 6m wide by 3m projection. Optional pelmet is available in 8 standard colours. Aluxor awnings are built to last.



All operating components are designed and manufactured in Germany and certified by international testing agency TÜV to the European standard 'CE Marking'.

The Secuflex 50 folding arms use tensioned, spring loaded, PVC coated twin cables that provide added protection against corrosion. These cables are individually hung to provide excellent wind stability and fabric tension.

The Secuflex 50 folding arms are able to withstand 120,000 cycles of stress, as certified by Materials Testing Authority of Germany.

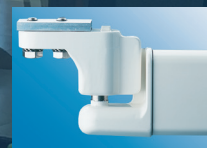
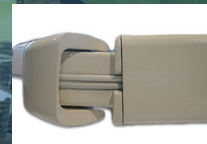
Patented pivot ball front bar connector provides the best possible operational safety.

Extruded aluminium profiles for pelmets and cassettes provide solid, stable and long lasting quality that will not rust or vibrate in harsh conditions.

Construction hardware is made of marine grade 316 stainless steel.

Powdercoated galvanised steel support bars have a high durability epoxy undercoat, Pacesetter HP200, 160 microns thick to provide additional anti-corrosion protection.

Patented aluminium brackets and components with pretreated powdercoat finish.

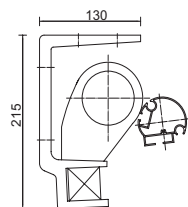


Specifications

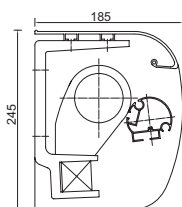
<i>Dimensions mm (h x d)</i>	✓ 215 x 130 / 245 x 185 pelmet
<i>Width single unit</i>	✓ 2m - 6m
<i>Projection range</i>	✓ 1.5m - 3m
<i>Pitch range</i>	✓ Up to 35°
<i>Extruded Aluminium pelmet</i>	A 8 Standard colours
<i>Fabric</i>	✓ Acrylic canvas with valance
<i>Operating mechanism</i>	✓ Manual
<i>Automation features</i>	A Remote operated motor
<i>Automation sensors</i>	A Motion, sun and wind

✓: Standard A: Available

* Designs and specifications may change without notice.



No Pelmet



Pelmet

Standard Powdercoat Colours

 White Satin

 Silver Matt

 Cream Satin



*Conditions apply

Aluxor Awning Systems
Aluxor Industries Pty Ltd
www.aluxor.com.au

ALUXOR |||||
AWNING SYSTEMS